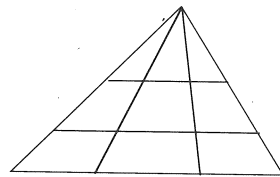


1a

- 1 $100 - 26$.
- 2 Seven sixes.
- 3 Treble 5.
- 4 35×2 .
- 5 $27 + 43$.
- 6 How many metres is 321 cm?
- 7 $9 \div 2$.
- 8 $\square \times 4 = 44$.
- 9 Add 3, 8 and 5.
- 10 Approximately, what is 21×19 ?

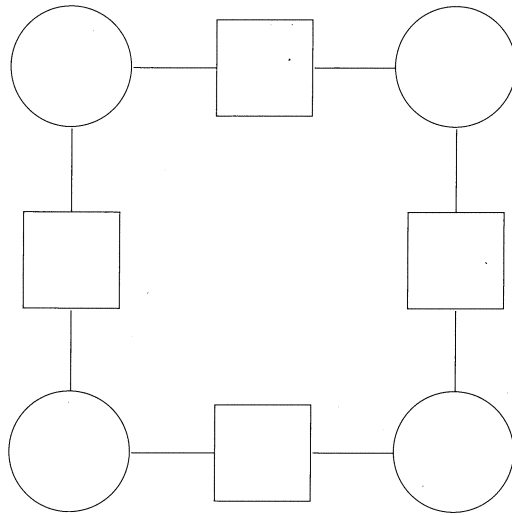
1b

- 1 Add the odd numbers between 8 and 14.
- 2 Does my car hold 40 litres or 40 millilitres of petrol in its tank?
- 3 Write **two thousand and seventeen** in figures.
- 4 Lucy and Ben shared 12p and 18p equally between them. How much did each of them get?
- 5 The bus had 32 people on it. 8 got off and 9 got on. How many were on the bus then?
- 6 What number divided by 7 gives 7?
- 7 4 toffees cost 20p. How much are 12 toffees?
- 8 What is twice the sum of 7 and 15?
- 9 I have seven 5p coins. If I spend 22p, how much is left?
- 10 How many triangles can you see altogether?



1c

Copy the diagram.



Use each of the numbers 1 to 8.

Write one number in every square and circle.

A number in a square must equal the sum of the two numbers on each side of it.

1 2 3 4 5 6 7 8

1d

1 $72 - 44.$

2 $10 \div 4.$

3 Double 29.

4 $9 \times 5 + 4.$

5 $38 + 55.$

6 How many pence is £7.58?

7 $300 - 250.$

8 Add 4, 9 and 7.

9 $7 \times 9.$

10 $90 \div 3.$