

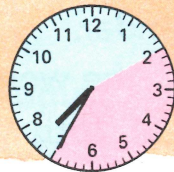
- 1 Next day Karim hires a new game called *Robot*. Everyone wants to play it, so he makes a timetable. Find the starting time for each player.

Player	starts at	plays for	finishes at
Tessa		1 hour	10.00 am
Matt		1 hour	11.30 am
Mandy		2 hours	1.45 pm
Roz		2 hours	3.50 pm
Glen		3 hours	7.15 pm



Tessa plays *Treasure 2* with a time limit of 25 minutes. After the screen blanks out she sees this message. →

She works out that she started playing at 7.10 pm



- 2 Find the starting times.

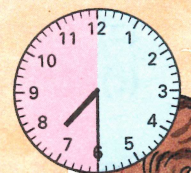
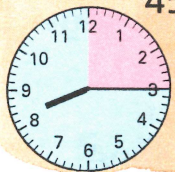
	Player	Time limit	stopped
(a)	Mandy	25 minutes	6.30 pm
(b)	Matt	25 minutes	4.45 pm

	Player	Time limit	stopped
(c)	Karim	25 minutes	2.40 pm
(d)	Roz	25 minutes	12.50 pm

Glen found the *Lost Princess* at 8.15 pm after playing for 45 minutes. When did he start?

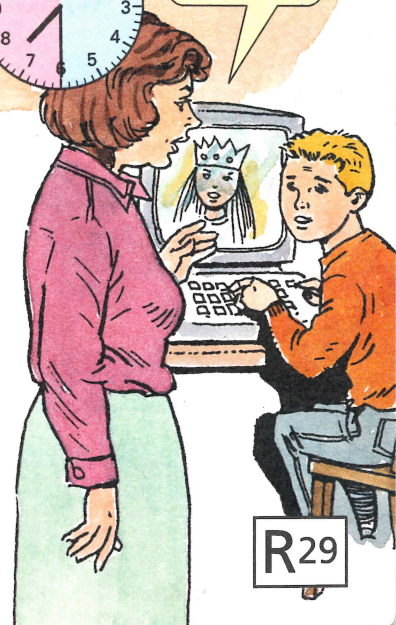
← From 8.15 go back 15 minutes to 8.00.
From 8.00 go back 30 minutes to 7.30 →

Glen started playing at 7.30 pm.



That's enough!

- 3 Find the starting times.
- Mandy found the princess at 3.20 pm, after 30 minutes.
 - Karim found her at 10.05 am, after 20 minutes.
 - Tessa found her at 2.35 pm, after 40 minutes.
 - Roz found her at 5.10 pm, after 25 minutes.



Go to Workbook page 7.

R29