

P7 Transfer Test**Paper 6**

Time allowed: 1 hour

Please complete the following information:

Name: _____

Class: _____

Teacher: _____

Date: _____

Mathematics		
Page	Marks	Score
7	(4)	
9	(5)	
10	(7)	
11	(3)	
12	(7)	
Total (26 Marks)		

English		
Page	Marks	Score
3	(2)	
4	(8)	
5	(2)	
6	(6)	
13	(2)	
14	(6)	
Total (26 Marks)		

No battery - No chance!

1 The Northern Ireland Fire Service are currently running a campaign whose slogan 'No battery- no chance' aims to bring home to the public the need for smoke alarms to be fully operational.

2 Mr Armstrong said: "I commend the Fire Service for producing this slogan which sends out a very clear and distinct message. In the event of a fire if smoke alarms have not been fitted with batteries or batteries have become redundant, you have no chance!

3 "I would encourage the public to make regular checks on their smoke alarms to ensure that they are operating properly. I would also urge the public to seek advice from the Fire Service as regards the best places to fit the device. Often devices are fitted in places, which do not maximise the chances of detecting a fire or smoke."

4 Commenting upon the cost factor Mr Armstrong said: "When you take into consideration the relatively low cost of buying a smoke alarm and weigh that against the possible saving of life and property, there really is no hard decision to make.

5 "I urge the public to make the responsible choice, which is, having smoke alarms fitted and carrying out regular checks to ensure batteries are operational. A few pounds and a few minutes of your time could potentially save your life!"

9. Which *phrase of two words* in the *first* paragraph means 'working properly'?

fully operational

10. Which *safety device* is mentioned in the article?

smoke alarms

Do not write in this column

✓

✓

GO STRAIGHT TO PAGE 4

2 Marks

11. The opposite of the words below can be formed by prefixing each word with either in or un.

Write the opposites of the following words in the spaces below.

Answers are not in the passage

clear unclear

distinct indistinct

12. Find a phrase of two words which means the same as 'cheap'.

low cost or few pounds

13. What are the two reasons for smoke alarms not working?

paragraph 2

Write your answers in the spaces below.

(1) not fitted with batteries

(2) batteries have become redundant

14. From which organisation does Mr Armstrong encourage the public to seek advice?

Fire Service

15. Which two pieces of safety advice are given by Mr Armstrong in the last paragraph? Write your answers in the spaces below.

(1) have smoke alarms fitted

(2) carry out regular checks to ensure

batteries are operational

Do not write in this column

✓

✓

✓

✓

✓

✓

✓

✓

RASPBERRIES

A very tasty fruit!

1 If you've been paying high prices for raspberries this summer, why not grow some of your own?

2 With their baby-soft skin and delicate construction, raspberries are the most fragile of fruits. Both form and flavour deteriorate fast after picking, making them labour-intensive to harvest and costly to buy. Growing your own allows you to indulge in a summer feast that can last to October, and you can freeze any surplus for later.

3 Raspberries don't need a lot of space and couldn't be easier to prune. Although prone to a number of pests and diseases, if you get the soil conditions right, they are likely to thrive and crop for years.

4 Raspberries are easily damaged during picking. The best solution is to harvest them on the day they are required and do not let them be crushed by their own weight. The fruit does not ripen at the same time, so harvesting can take place over several weeks.

5 Raspberries freeze very well. Initially freeze them spread out on a plate or dish to stop them all freezing into a mass. When frozen they can be put in plastic bags or containers and stored in the freezer. They can be stored safely for a couple of months.

16. What is the reason first mentioned in the article for growing your own raspberries?

(paying) high prices (in shops)

17. Which hyphenated word describes the delicate nature of raspberries?

baby-soft

Do not write in this column

✓

✓

18. Some of the following statements are either true or false.

Tick the correct box.

Raspberries are inexpensive.

Raspberries cannot be preserved in a freezer.

Raspberries are hard to prune.

Raspberries ripen at the same time.

(if grown at home)

True

False

(if bought in shops) either

All 3 = 2 marks
1 or 2 = 1 mark

Do not write in this column

19. Which phrase of four words means the same as 'storage items'?

plastic bags or containers

20. Which words in the story have a similar meaning to each of the following four words or phrases? Write your answers in the spaces provided.

grow well

thrive

All 4 = 2

2 or 3 = 1

answer to a problem

solution

fragile

delicate or easily damaged

taste

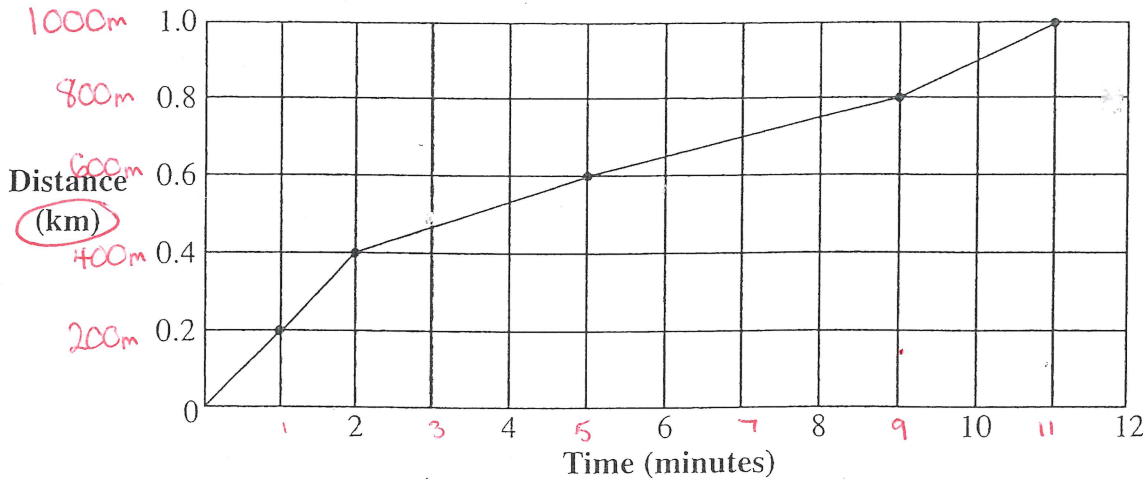
flavour

21. Why would raspberries be a good choice of fruit to grow in a small garden?

don't need a lot of space

Brian took part in a 1 km fun run. The graph below shows his times during the race.

Graph of Brian's Fun Run



22. How far had Brian run after 5 minutes?

Give your answer in metres. 600 metres

23. How long did it take Brian to complete ^{800m}~~80%~~ of the course?

Give your answer in minutes. 9 minutes

24. Brian ran the first 200 m slower than the final 200 m of the fun run. Answer True or False in the space below.

false

25. There are 11 classes in Old Lane School.

Each class has exactly 27 pupils. 33 pupils were absent one day.

How many pupils attended school on that day?

$$\begin{array}{r}
 27 \\
 \times 11 \\
 \hline
 27 \\
 270 \\
 \hline
 297 \\
 \hline
 297 \\
 - 33 \\
 \hline
 264
 \end{array}$$

Do not write in this column

✓

✓

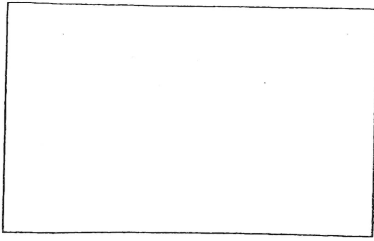
✓

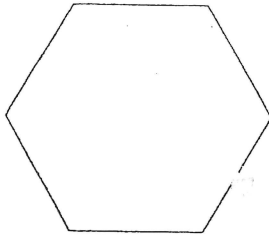
✓

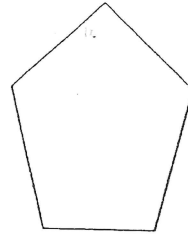
regular = all sides equal in length
= all angles equal.

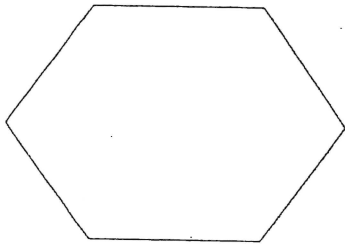
28. Which of the following shapes are regular polygons?

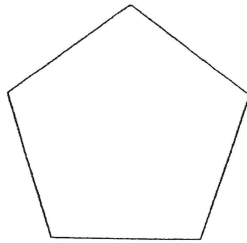
Tick the correct boxes below.

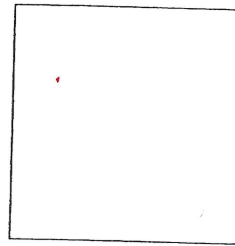












Do not write in this column

All 3 = 2
1 mistake = 1

✓
✓

29. A railway carriage holds a maximum of 84 passengers.

The carriage is $\frac{3}{4}$ full.

divide by 4 then multiply by 3

$$\begin{array}{r} 21 \\ 4 \overline{) 84} \\ \underline{4} \\ 4 \\ \underline{4} \\ 0 \end{array} \quad \begin{array}{r} 21 \\ \times 3 \\ \hline 63 \end{array}$$

How many passengers are in the carriage? 63 passengers

✓

30. Fred bought 2 DVDs for £14.45 each.

$$\begin{array}{r} 14.45 \\ \times 2 \\ \hline \pounds 28.90 \end{array}$$

$$\begin{array}{r} 28.90 \\ + 2.55 \\ \hline \pounds 31.45 \end{array}$$

He also bought 3 magazines for 85p each.

$$\begin{array}{r} 85 \\ \times 3 \\ \hline 255p \pounds 2.55 \end{array}$$

$$\begin{array}{r} \pounds 31.45 \\ - 28.90 \\ \hline 2.55 \\ \pounds 18.55 \end{array}$$

How much change will he get from £50? £ 18.55

✓

31. Complete the following calculation.

8.09 x 8 = 64.72

$$\begin{array}{r} 8.09 \\ \times 8 \\ \hline 64.72 \end{array}$$

✓

32. A car used an average of 7.6 litres of unleaded petrol per hour during a six hour journey.

What was the total amount of unleaded petrol used to complete the whole journey?

$$\begin{array}{r} 7.6 \\ \times 6 \\ \hline 45.6 \end{array}$$

45.6 litres

33. Bob has a bag of coins.

The bag contains the following coins:

5 x 5p coins 25p

6 x 10p coins 60p

12 x 20p coins £2.40

11 x 50p coins £5.50

How much money altogether is in the bag?

£ 8.75

How much money would Bob have left if he spent two fifths of the money?

$\frac{2}{5} \div \text{by } 5 \text{ then } \times \text{ by } 2$

$$\begin{array}{r} 1.75 \\ 5 \overline{) 8.75} \\ \underline{5} \\ 3.75 \\ \underline{3} \\ 0.75 \\ \underline{0} \\ 0.75 \\ \underline{0} \\ 0.00 \end{array}$$

$$\begin{array}{r} 1.75 \\ \times 1.2 \\ \hline 3.50 \end{array}$$

£5.25

$$\begin{array}{r} 8.75 \\ - 3.50 \\ \hline 5.25 \end{array}$$

The diagram below shows the number of children who attended a youth club each night during one week in December.

Mon	Tues	Wed	Thurs	Fri	Sat	Sun
52	63	86	0	185	222	148

34. How many children altogether attended the Youth Club from Monday to Thursday?

201

35. How many more children attended the Youth Club on Saturday than on Tuesday and Wednesday?

73

36. On which night was the Youth Club cancelled due to a heavy snow fall?

Thursday

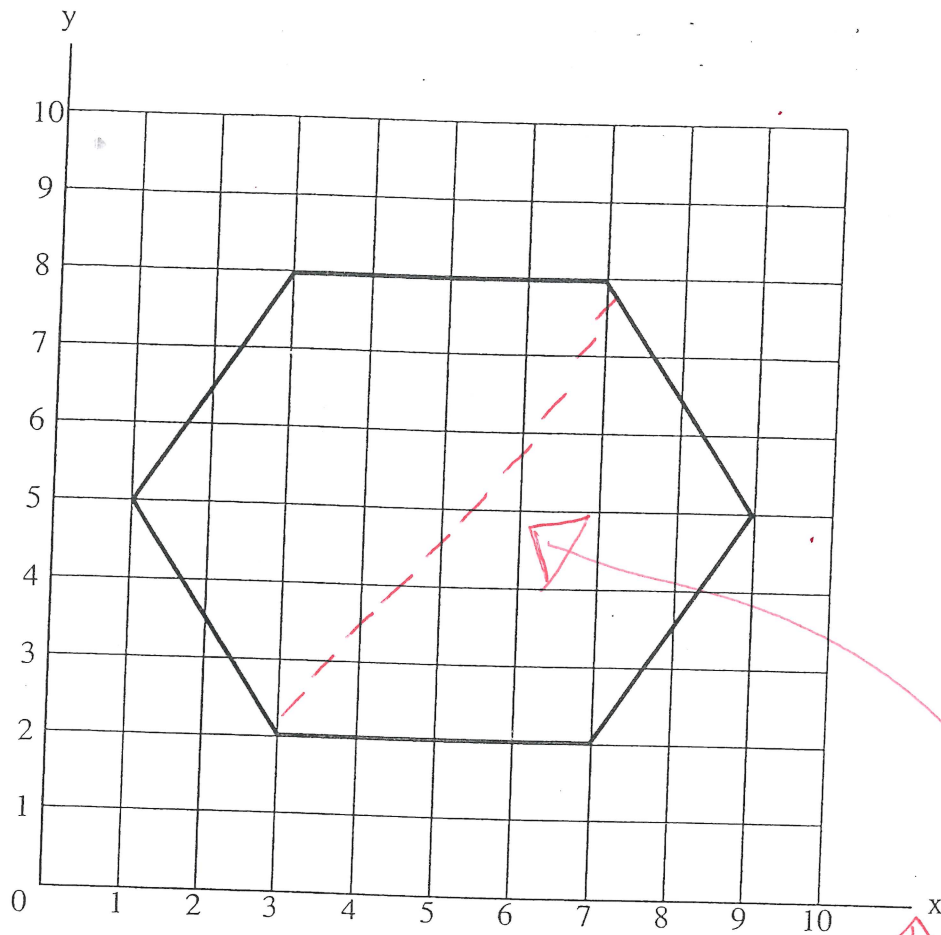
37. What was the mean (average) number of children who attended the Youth Club ?

All children (7 days) \div 7

108

Do not write in this column	
✓	
✓	
✓	
✓	
✓	
7 Marks	

Julie draws a hexagon on the grid below.



38. Draw a line of symmetry from $(3, 2)$ to $(7, 8)$ → across then up

39. Complete the co-ordinates of the hexagon in the spaces below to match the shape drawn on the grid.

$(3, 8)$ $(7, 8)$

$(1, 5)$ $(9, 5)$ All

$(3, 2)$ $(7, 2)$

The weekly circulation of a Knitting magazine was 45,637.

The weekly circulation of a Chess magazine was 52,342.

$$\begin{array}{r}
 4541342 \\
 - 45637 \\
 \hline
 06705
 \end{array}$$

40. How many more Chess magazines were sold than knitting magazines?

6705

Do not write in this column

✓

✓

✓

BELFAST CASTLE

A short history

1 Belfast Castle is one of the most familiar landmarks for anyone visiting the city. It overlooks Belfast from a prominent site 400 feet above sea level on the slopes of Cave Hill. This magnificent sandstone building has recently been restored by the Belfast City Council's Parks Department.

2 After re-marrying in 1862, the 3rd Marquis of Donegal decided to build a new residence within the deer park on the slopes of Cave Hill. Belfast Castle is built in the Scottish Baronial style of castles such as Balmoral Castle. The construction of Belfast Castle began in 1853.

3 The building was finally completed in 1870, having far exceeded the initial estimate cost of £11,000. The Donegal coat of arms appears over the front door and on the north wall of the castle. The Italian Style serpentine staircase was not on the original plans but was added in 1894 by the 9th Earl of Shaftesbury as a present for his mother. It connects the main reception rooms in the castle to the garden terrace.

4 In 1934 the Shaftesbury family presented the castle and estate to the City of Belfast. From the end of the 2nd World War until the 1970s the castle became a popular venue for wedding receptions, dances and afternoon teas. In 1978 Belfast City Council instituted a major refurbishment programme which cost over two million pounds. The building was officially re-opened to the public on 11 November 1988.

46. In which year did the building of Belfast Castle ^{begin} commence?

1853

47. Which natural material was used to build the castle?

sandstone

Do not write in this column

✓

✓

