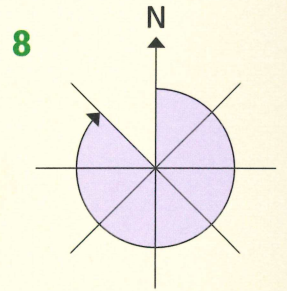
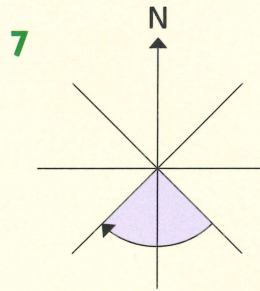
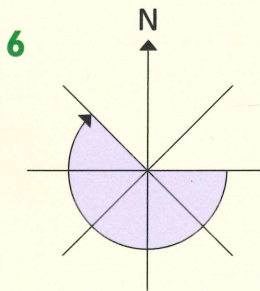
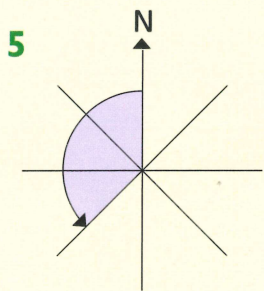
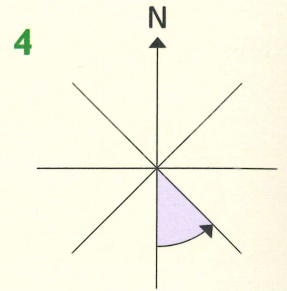
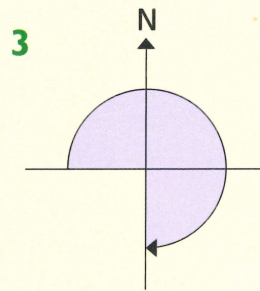
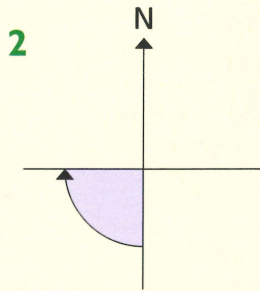
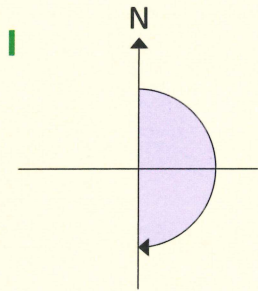
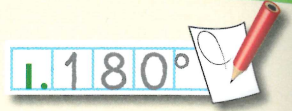
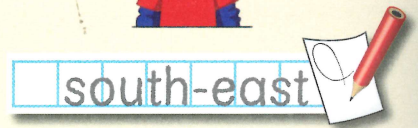


Write the size of these angles in degrees.



I face north.

Which direction will I face if I turn clockwise through:



9 135°?

10 360°?

11 180°?

12 45°?

13 315°?

14 270°?

15 450°?

16 225°?

17 405°?



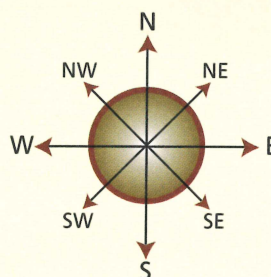
What if I was facing south-west and made the same turns?



Write the number of degrees in each turn.

1. 90°

A weather vane turns through different angles. Write the angle it turns each time as it moves:



10. 45°

- 10 clockwise from N to NE
- 11 anticlockwise from S to E
- 12 clockwise from NE to S
- 13 anticlockwise from N to S
- 14 clockwise from N to SW
- 15 clockwise from NE to NW.



Write some more of your own for your partner to solve.



I can relate compass points to angles