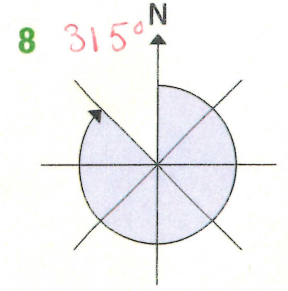
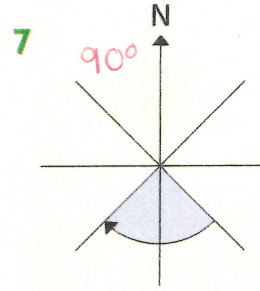
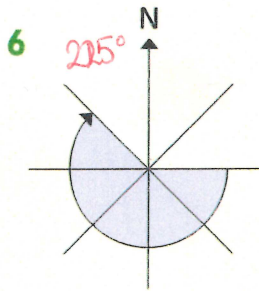
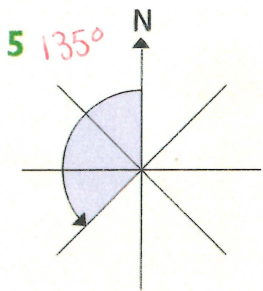
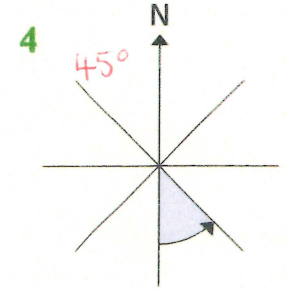
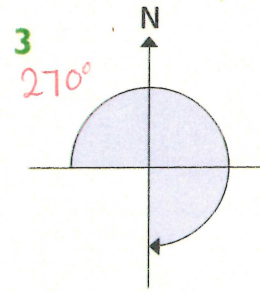
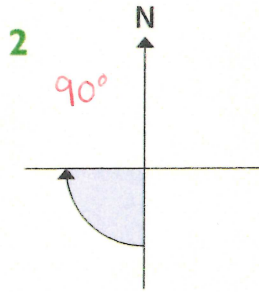
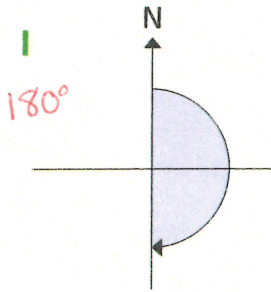


Write the size of these angles in degrees.

1. 180°



I face north.

Which direction will I face if I turn clockwise through:



south-east

9 135°? SE

10 360°? N

11 180°? S

12 45°? NE

13 315°? NW

14 270°? W

15 450°? E  
360° + 90°

16 225°? SW

17 405°? NE  
360° + 45°

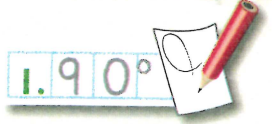


What if I was facing south-west and made the same turns?



# Angles

Write the number of degrees in each turn.



1 90°

2 225°

3 135°

4 45°

5 315°

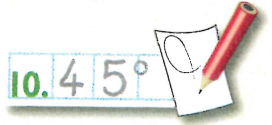
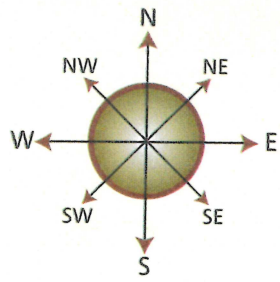
6 90°

7 135°

8 90°

9 45°

A weather vane turns through different angles. Write the angle it turns each time as it moves:



- 10 clockwise from N to NE 45°
- 11 anticlockwise from S to E 90°
- 12 clockwise from NE to S 135°
- 13 anticlockwise from N to S 180°
- 14 clockwise from N to SW 225°
- 15 clockwise from NE to NW. 270°



Write some more of your own for your partner to solve.



I can relate compass points to angles