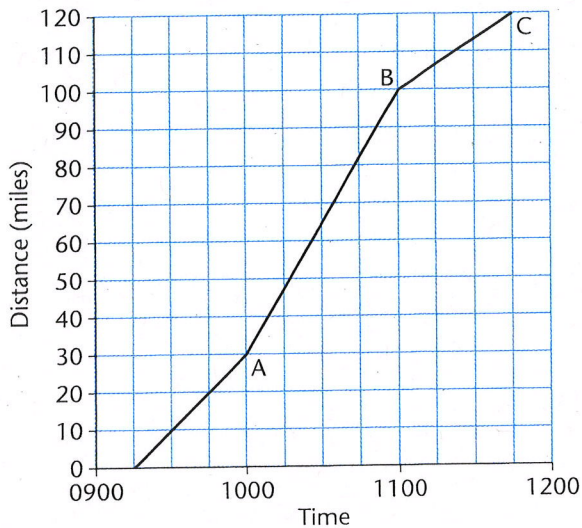


**TARGET** To interpret line graphs showing journeys and use them to solve problems.

**Example**

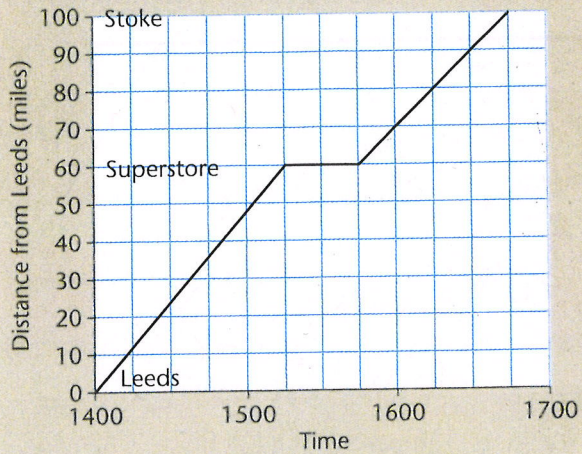
This line graph shows a car journey from the driver's home to Camford.



- 1 When does the journey begin?  
Answer 09:15
- 2 How far is it from the driver's home to A?  
Answer 30 miles
- 3 How far had the car travelled at:  
a) 9:30                      Answer 10 miles  
b) 10:30?                  Answer 65 miles
- 4 At what time does the car reach B?  
Answer 11:00
- 5 What is the distance from B to C?  
Answer 20 miles
- 6 Give the car's speed between A and B.  
Answer 70 miles per hour

**A**

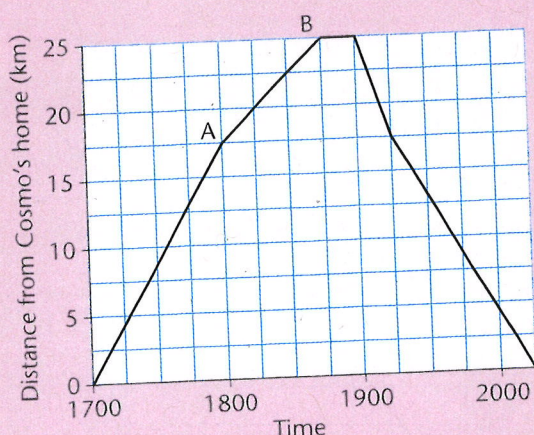
This graph shows Katina's car journey from Leeds to Stoke.



- 1 How far is it from Leeds to Stoke?
- 2 How far is it from the superstore to Stoke?
- 3 At what time does Katina:  
a) arrive at the superstore  
b) arrive at Stoke?
- 4 How long does she stop at the superstore?
- 5 How long does the journey take:  
a) from Leeds to the superstore  
b) from the superstore to Stoke?
- 6 How far has Katina travelled at 4pm?
- 7 At what time does Katina pass a sign which tells her it is 10 miles to Stoke?
- 8 Give the speed of the car from the superstore to Stoke.
- 9 How long does the journey take altogether?

**B**

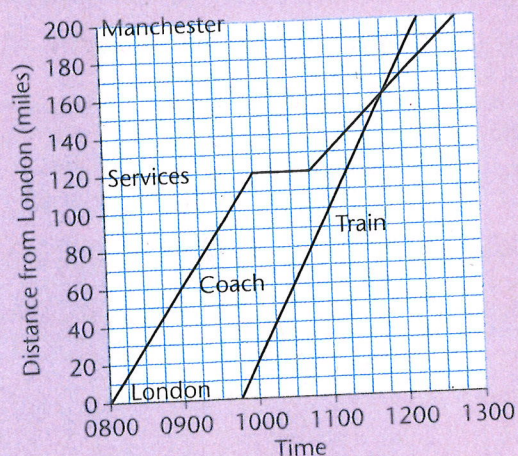
Cosmo cycles to the base of a tall hill (Point A), rides up to the summit (Point B), enjoys the view and then returns home.



- How far is it from Cosmo's house:
  - to the base of the hill (A)
  - to the summit of the hill (B)?
- At what time did Cosmo:
  - begin the return journey
  - arrive back at home?
- How long did he spend enjoying the view?
- How long did it take him to cycle:
  - from his home to the base of the hill
  - from the base of the hill to the summit?
- Give the speed in kilometres per hour at which Cosmo cycled on his return journey:
  - from the summit to the base of the hill
  - from the base of the hill to his house?

**C**

This graph shows the journeys made by groups of football fans travelling from London to Manchester by coach or train.



- At what time did:
  - the coach arrive at the motorway services
  - the train leave London?
- How far had the coach travelled before it stopped at the services?
- How long did the coach stop?
- How far had the train travelled when:
  - the coach arrived at the services
  - the coach left the services?
- How far apart were the coach and the train:
  - when the coach left the services
  - at 12:00
  - when the train arrived at Manchester?
- At what time had both coach and train travelled the same distance?
- What was the speed in mph of:
  - the coach from London to the services
  - the coach from the services to Manchester
  - the train?