

# Winter Poetry

## Task 1

Read the poem.

## Winter

Winter wears a soft white cloak,  
She swirls around in fire's smoke.  
See satin snowflakes in her hair,  
When temperatures drop and trees go bare.

Winter wraps herself in twinkly lights,  
Sets teeth chattering on wintry nights.  
Hear whistling wind when she speaks -  
She has glistening eyes and rosy cheeks.

Winter wears warm woolly socks  
But turns our feet to icy blocks!  
See her frozen footprints on the street  
Her rage is hail; her tears are sleet.

Winter turns our thoughts to hot drinks,  
To sledging, snow angels and ice rinks.  
Hear bright bells ringing and choirs singing  
Now Winter's time is just beginning!



## Task 2

The poet is writing about winter as if the season was a person.

When a poet writes about things as if they were a person, this is called **personification**.

1. What does the poet say that Winter wears?

---



---

2. What does the poet say it sounds like when Winter speaks?

---



---

3. What two things does Winter turn in the poem?

---



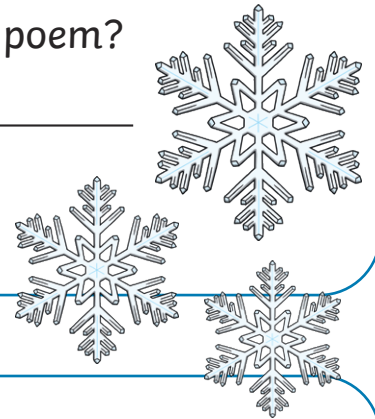
---

4. What winter weather words are mentioned in the poem?

---



---



## Task 3

Can you find the rhyming pairs in the poem?

hair – \_\_\_\_\_

drinks – \_\_\_\_\_

smoke – \_\_\_\_\_

cheeks – \_\_\_\_\_

**Task 4**

In some of the lines, the poet has used a few words that all begin with the same letter or sound. This is called alliteration.

For example:

Winter wears warm woolly socks

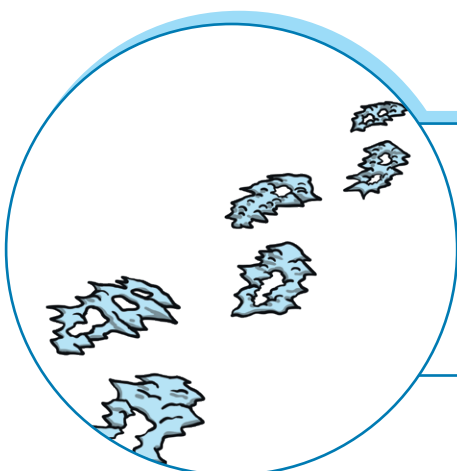
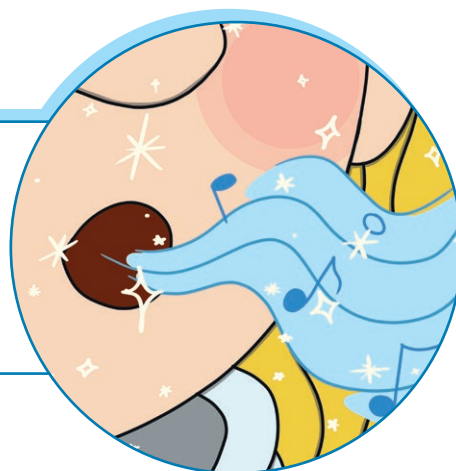
**Can you find other examples of alliteration in the poem?**

**Hint:** use the pictures as clues.



1. \_\_\_\_\_  
 \_\_\_\_\_

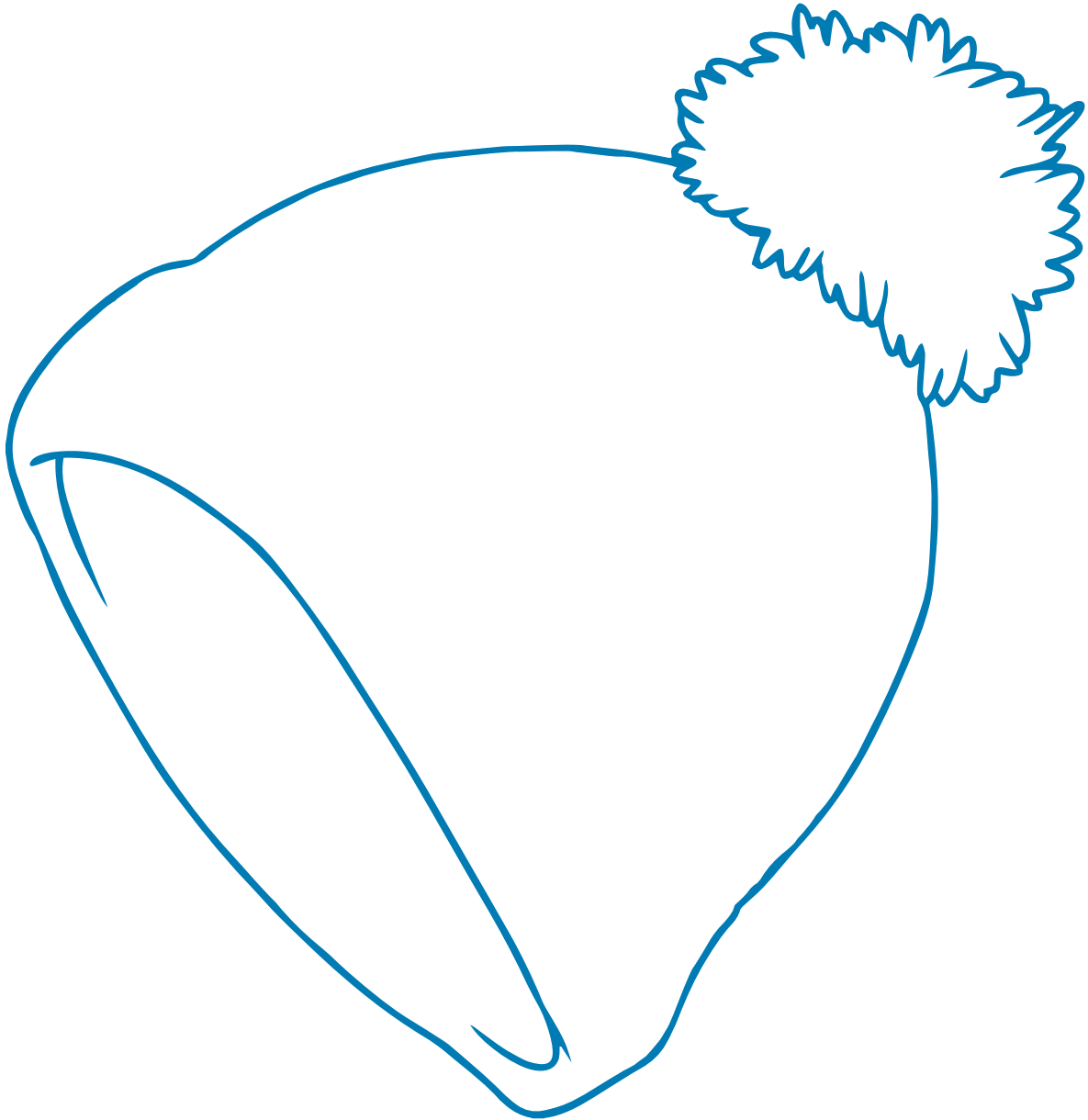
2. \_\_\_\_\_  
 \_\_\_\_\_



3. \_\_\_\_\_  
 \_\_\_\_\_

## Task 5

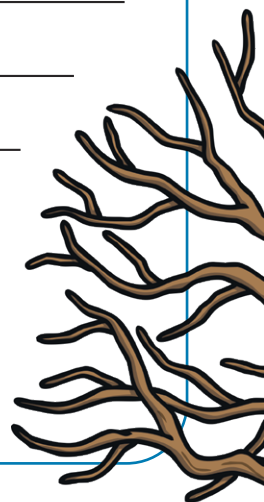
Think about all the signs of winter and the things that happen in this season. Write some words and ideas in the woolly hat.



**Use your ideas to write a poem about winter. Remember, poems do not have to rhyme!**

In the box, draw pictures to illustrate your poem.

Handwriting practice area with 12 horizontal lines.



Large blank writing area for a poem.



# Winter Poetry Answers

## Task 2

1. What does the poet say that Winter wears?

**The poet says that Winter wears a soft white cloak and warm woolly socks.**

2. What does the poet say it sounds like when Winter speaks?

**The poet says that it sounds like whistling wind when Winter speaks.**

3. What two things does Winter turn in the poem?

**In the poem, Winter turns our feet to icy blocks and our thoughts to hot drinks, sledging, snow angels and ice rinks.**

4. What winter weather words are mentioned in the poem?

**Winter weather words mentioned in the poem are snow, hail, sleet, wind and ice.**

## Task 3

Can you find the rhyming pairs in the poem?

**hair – bare**

**drinks – rinks**

**smoke – cloak**

**cheeks – speaks**

## Task 4

1. **See satin snowflakes**
2. **whistling wind**
3. **frozen footprints**

## Task 5

**Pupils' own plans and winter poems**